



Microsoft Dynamics GP Application Integration

Key Features

- SharePoint integration to manage and archive documents.
- EMC Documentum integration for Enterprise Content Management.
- Single click access to related documents by transaction or query.
- Attach documents directly from within Microsoft Dynamics GP
- Scan documents from within Microsoft Dynamics GP.
- CI Desktop runs “outside” of GP and requires no screen modification to GP.
- Visual queue to the number of documents that are related to the active screen in GP.
- Extendable to other applications outside of Dynamics GP.

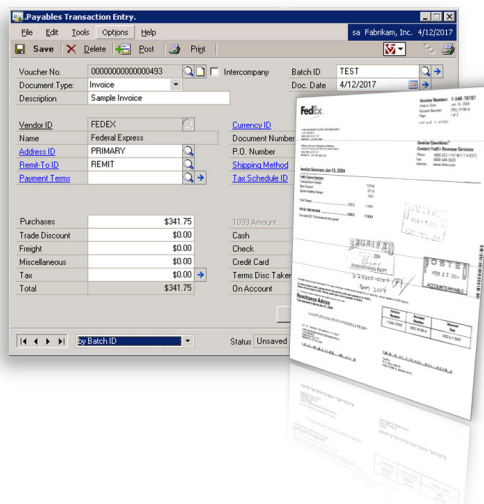
CoreIntegrator® | 3.0 is a comprehensive, feature rich workflow environment that seamlessly integrates business processes with documents and other forms of electronic content. Out of the box, it provides a seamless environment with Microsoft Dynamics GP and can be expanded to other applications. Whether you are interested in simply integrating documents to transactions or your needs expand to implementing complex workflows, CoreIntegrator® | 3.0 is the right solution.

Seamless Integration

It's like having your filing cabinet integrated right within Dynamics GP, except now we're integrating virtually any kind of document: Office documents, .pdf files, scanned images, email, drawings, image formatted documents and so on. No matter where you are in Dynamics GP, CI Desktop allows you to instantly retrieve and view related documents with a single mouse click—it doesn't get much easier than that.

Scan, Attach and View

Even though we've helped eliminate those filing cabinets, you will still need to emulate the “filing” process for those documents that are constantly added to existing files. But instead of leaving your desk and manually searching through file folders so that you can file away additional documentation, CI Desktop automates that process for you. If your document is already in an electronic format, just go to the window or transaction in GP that you want to associate it with and click the “Attach” button on the CI Desktop toolbar. If it's a paper document and you have a scanner, just click the “Scan” button on the toolbar and you've instantly filed away your documents—no additional typing required.



Screen shot of Payables Transaction Entry window with simulated image of associated invoice.

Seamless Integration

- **Microsoft Dynamics GP**
 - General Ledger
 - Accounts Payable
 - Accounts Receivable
 - Sales Order Processing
 - Human Resources
 - Payroll
 - Inventory
 - Fixed Assets
 - Bank Reconciliation
 - Bill of Materials
 - Invoicing
 - Purchasing
- **SharePoint**
 - Windows SharePoint Services
 - Microsoft Office SharePoint Server
- **EMC Documentum**
 - Documentum AX6
- **Scanning Solutions**
 - ReadSoft Invoices
 - EMC Captiva Products
 - Kofax Capture and Kofax Express

Document Management

Taking control means storing your documents (now electronic images) in a secure content management system. That means you can track the document from beginning to end without risk of losing the document or not knowing who has it. The archived document will also include supporting documentation as well as audit trail information that is easily accessible by anyone who has the proper rights to that document.

Integration Points

(out of the box)

General Ledger:

- G/L Transaction
- G/L Inquiry
- Quick Journal Entry
- Quick Journal Inquiry
- G/L Account Setup

Accounts Payable:

- Payables Transaction Entry
- Payables Transaction Inquiry
- Manual Payment Entry
- Manual Payment Inquiry
- Vendor Maintenance
- Vendor Inquiry
- Intercompany

Accounts Receivable:

- Receivable Transaction Entry
- Receivable Inquiry
- Cash Receipts Entry
- Cash Receipts Inquiry
- Customer Maintenance
- Customer Inquiry
- Salesperson Maintenance

Purchasing:

- Purchase Order Entry
- Purchase Order Inquiry
- Purchasing Invoice Entry
- Purchasing Invoice Inquiry
- Receiving Entry
- Receiving Inquiry

Inventory:

- Item Entry
- Item Transfer
- Inventory Inquiry
- Item Maintenance
- Item Inquiry

Payroll:

- Employee Maintenance
- Employee Inquiry
- Employee Benefit
- Employee Deduction
- Employee Direct Deposit
- Employee Tax
 - Local, State, Federal

Bank Reconciliation:

- Bank Deposit Entry
- Bank Deposit Inquiry
- Bank Transaction Entry
- Bank Transaction Inquiry

Bill of Materials:

- Assembly Entry
- Assembly Inquiry
- Bill of Materials Maintenance

Sales Order Processing:

- Sales Transaction Entry
- Sales Transaction Inquiry
- Sales Order Fulfillment

Invoicing:

- Invoice Entry
- Invoice Inquiry

Fixed Assets:

- Asset General Information

Human Resources:

- Employee Maintenance
- Benefits/Deductions Summary
- Benefits/Deductions Overview
- Employee Dependents
- Discipline Entry
- Education
- Grievances
 - I-9
- Employee Injury
- Orientation Checklist
- Property
- Employee Review
- Review Policies Setup
- Employee Skills
- Termination Checklist
- Test, Training and Transfers
- Unions
- User Defined
- Cash Account
- Health Insurance
- Life Insurance
- Retirement Plans
- FMLA
- Attendance Maintenance
- Attendance Transaction Entry

About CSSI

When it comes time to selecting a solution, you want to work with a company that understands your environment. CSSI is not only a user of Microsoft Dynamics GP, we've been a certified business partner since 1996 with a dedicated in-house team of consultants supporting the same application that runs your business—it's a huge advantage knowing more than just our products. And with our ever expanding partner base, we can provide local assistance in almost any area of the country.

CSSI Corporate:

145 North 15th Street - Lewisburg, PA - 17837
570-524-4424

www.cssi.com www.coreintegrator.com info@cssi.com

