

Accounts Payable

Key Features

- Flexible, feature rich Workflow Application.
- SharePoint integration to manage and archive documents.
- Microsoft Dynamics GP seamless Integration for viewing and attaching documents to transactions.
- Out of the box workflows for Accounts Payable (PO and Non PO), Requisitions and Sales Order Processing.
- Unlimited workflow designs for other business needs.
- Single interface to manage documents during and after workflow process.
- Support for EMC Documentum Imaging solutions for enterprise content management needs.
- Scanning support for OCR/ICR and general purpose scanning of paper documents.
- Web based .net applications for ease of deployment.
- Email notifications and “conversation” support.

CoreIntegrator® | 3.0 is a comprehensive, feature rich workflow environment that seamlessly integrates business processes with documents and other forms of electronic content. Accounts Payable is proven to be a very expensive, labor intense process in many organizations; CoreIntegrator® | 3.0 provides proven and focused solutions to address the payables and procurement process within your organization.

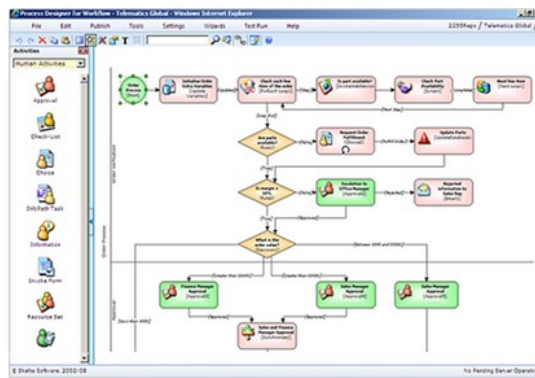
Take Control

For the first time, know where every document is, who has it, for how long, and what needs to be done to complete the approval process. Users are notified when action is required and they can instantly review the document with other team members to more efficiently act on the document.

View related documents: purchase orders, packing slips and requisitions right at your finger tips. One single user interface provides you with access to your work, the status of your work and access to a historical archive of all past documents.

Automate the Approval Process

Every organization has a set of rules or guidelines (some more loosely controlled than others) to determine how an invoice is approved for payment. Those rules typically involve what type of invoice it is, how much it is and whose budget it affects. Invoices may be split between different departments or people and then routed accordingly within your organization. Based on these rules, CoreIntegrator® | 3.0 can automate not only the approval process but handle the exceptions as well and it's all managed behind the scenes with a powerful graphical workflow manager.



Screen shot of Graphical Workflow Designer

Seamless Integration

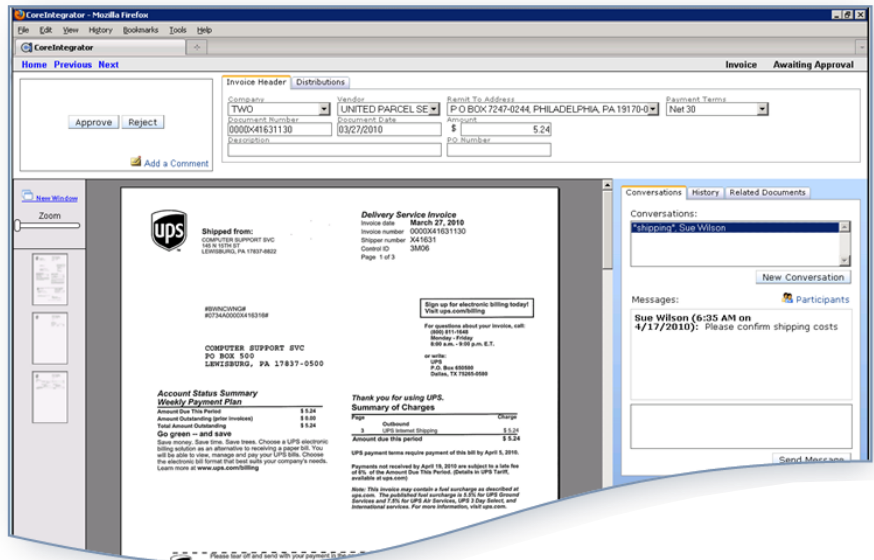
- **Microsoft Dynamics GP**
 - General Ledger
 - Accounts Payable
 - Accounts Receivable
 - Sales Order Processing
 - Human Resources
 - Payroll
 - Inventory
 - Fixed Assets
 - Bank Reconciliation
 - Bill of Materials
 - Invoicing
 - Purchasing
- **SharePoint**
 - Windows SharePoint Services
 - Microsoft Office SharePoint Server
- **EMC Documentum**
 - Documentum AX6
- **Scanning Solutions**
 - ReadSoft Invoices
 - EMC Captiva
 - Kofax Capture and Kofax Express

Document Management

Taking control means storing your documents (now electronic images) in a secure content management system. That means you can track the document from beginning to end without risk of losing the document—even if you have that occasional employee that has a habit of keeping an invoice “somewhere” on their desk—you’ll know right where it is. The archived document will also include supporting documentation as well as audit trail information that is easily accessible by anyone who has the proper rights to that document.

Application Integration

Since each document is related to a specific transaction in your accounting software, it makes sense that you would be able to instantly retrieve that document from within your business software. With CI Desktop, you are notified instantly when a document is available for viewing as you drill down to transactions in Microsoft Dynamics GP. With a single mouse click, you’ll be able to view the document and its history.



Above is a snapshot of the CoreIntegrator® | 3.0 Workspace—you have the ability to view documents, related documents, the history of a document, conversations and notes about a document, it’s the data entry page and it’s where you take action on the document such as approve or reject. It even adapts to the type of document you are processing or reviewing and it’s all contained in one easy to use interface.